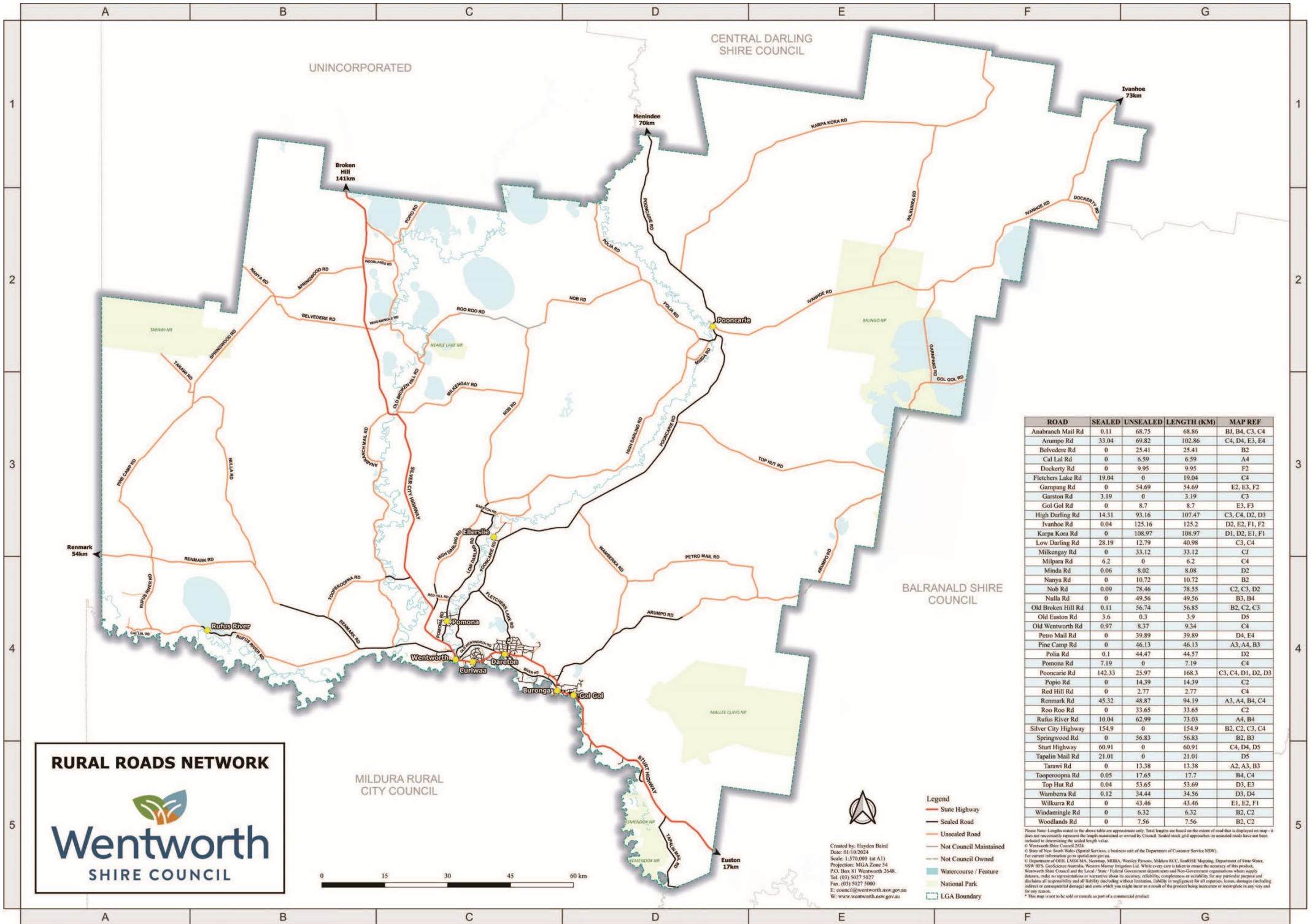


WENTWORTH SHIRE COUNCIL'S CURRENT ROAD CONDITION REPORT AS OF
Monday, 24 March 2025, 10:00am
WILL BE RELEASED WHEN CONDITIONS CHANGE.

ROAD NAME	STATUS	COMMENTS
ANABRANCH MAIL ROAD	OPEN	Caution
ARUMPO ROAD	OPEN	
BELVEDERE ROAD	OPEN	Caution
CAL LAL ROAD	OPEN	Caution
DOCKERTY ROAD	OPEN	Caution
GARNPANG ROAD	OPEN	Caution
GOL GOL ROAD	OPEN	Caution
HIGH DARLING ROAD (from end of bitumen)	OPEN	
IVANHOE ROAD	OPEN	Caution
KARPA KORA ROAD	OPEN	Caution
LOW DARLING ROAD (from end of bitumen)	OPEN	
MILKENGAY ROAD	OPEN	
MINDA ROAD	OPEN	
NANYA ROAD	OPEN	
NOB ROAD	OPEN	
NULLA ROAD	OPEN	Caution
OLD BROKEN HILL ROAD	OPEN	Caution
PETRO MAIL ROAD	OPEN	Caution
PINE CAMP ROAD	OPEN	Caution
POLIA ROAD (from HIGH DARLING RD to NOB RD)	OPEN	
POLIA ROAD (from NOB RD to SHIRE BOUNDARY)	OPEN	
POPIO ROAD	OPEN	
RED HILL ROAD	OPEN	
REMARK ROAD (from end of bitumen)	OPEN	Caution
ROO ROO ROAD	OPEN	
RUFUS ROAD	OPEN	Caution
SPRINGWOOD ROAD	OPEN	Caution
TARAWI ROAD	OPEN	
TOOPEROOPNA ROAD	OPEN	Caution
TOP HUT ROAD	OPEN	
WAMBERRA ROAD	OPEN	Caution
WILKURRA ROAD	OPEN	Caution
WINDAMINGLE ROAD	OPEN	

More frequent reviews may occur during periods of severe weather.

ANY PERSON DRIVING ON CLOSED ROADS WILL BE SUBJECT TO FINES AND MAY BE CHARGED FOR ANY WORKS NECESSARY TO RECTIFY THE DAMAGE.



RURAL ROADS NETWORK



Wentworth
SHIRE COUNCIL



Created by: Hayden Baird
Date: 01/10/2024
Scale: 1:370,000 (at A1)
Projection: MGA Zone 54
P.O. Box 81 Wentworth 2648.
Tel: (08) 5027 5027
Fax: (08) 5027 5000
E: council@wentworth.nsw.gov.au
W: www.wentworth.nsw.gov.au

- Legend**
- State Highway
 - Sealed Road
 - Unsealed Road
 - Not Council Maintained
 - Not Council Owned
 - Watercourse / Feature
 - National Park
 - LGA Boundary

ROAD	SEALED	UNSEALED	LENGTH (KM)	MAP REF
Anabranch Mail Rd	0.11	68.75	68.86	BJ, B4, C3, C4
Arumpo Rd	33.04	69.82	102.86	C4, D4, E3, E4
Belvedere Rd	0	25.41	25.41	B2
Cal Lai Rd	0	6.59	6.59	A4
Dockery Rd	0	9.95	9.95	F2
Fletchers Lake Rd	19.04	0	19.04	C4
Garmpang Rd	0	54.69	54.69	E2, E3, F2
Garston Rd	3.19	0	3.19	C3
Gol Gol Rd	0	8.7	8.7	E3, F3
High Darling Rd	14.31	93.16	107.47	C3, C4, D2, D3
Ivanhoe Rd	0.04	125.16	125.2	D2, E2, F1, F2
Karpa Korra Rd	0	108.97	108.97	D1, D2, E1, F1
Low Darling Rd	28.19	12.79	40.98	C3, C4
Milkengay Rd	0	33.12	33.12	C1
Milpara Rd	6.2	0	6.2	C4
Minda Rd	0.06	8.02	8.08	D2
Nanya Rd	0	10.72	10.72	B2
Nob Rd	0.09	78.46	78.55	C2, C3, D2
Nulla Rd	0	49.56	49.56	B3, B4
Old Broken Hill Rd	0.11	56.74	56.85	B2, C2, C3
Old Euston Rd	3.6	0.3	3.9	D5
Old Wentworth Rd	0.97	8.37	9.34	C4
Petro Mail Rd	0	39.89	39.89	D4, E4
Pine Camp Rd	0	46.13	46.13	A3, A4, B3
Polia Rd	0.1	44.47	44.57	D2
Pomona Rd	7.19	0	7.19	C4
Pooncarie Rd	142.33	25.97	168.3	C3, C4, D1, D2, D3
Popio Rd	0	14.39	14.39	C2
Red Hill Rd	0	2.77	2.77	C4
Renmark Rd	45.32	48.87	94.19	A3, A4, B4, C4
Roo Rd	0	33.65	33.65	C2
Rufus River Rd	10.04	62.99	73.03	A4, B4
Silver City Highway	154.9	0	154.9	B2, C2, C3, C4
Springwood Rd	0	56.83	56.83	B2, B3
Start Highway	60.91	0	60.91	C4, D4, D5
Tapalin Mail Rd	21.01	0	21.01	D5
Tarai Rd	0	13.38	13.38	A2, A3, B3
Tooperoop Rd	0.05	17.65	17.7	B4, C4
Top Hat Rd	0.04	53.65	53.69	D3, E3
Wamberra Rd	0.12	34.44	34.56	D3, D4
Wilkurra Rd	0	43.46	43.46	E1, E2, F1
Windmangle Rd	0	6.32	6.32	B2, C2
Woodlands Rd	0	7.56	7.56	B2, C2

Please Note: Lengths stated in the above table are approximate only. Total lengths are based on the extent of road that is displayed on map - it does not necessarily represent the length maintained or owned by Council. Sealed track grid approaches to unsealed roads have not been included in determining the sealed length value.

© Wentworth Shire Council 2024.

© State of New South Wales (Spatial Services), a business unit of the Department of Customer Service (NSW).

For copyright information go to: spatial.nsw.gov.au.

© Department of OHL, LADKMA, Norway, MDR, Wotley, Pooncarie, Milks RCC, SouthEast Mapping, Department of State Water, NSW RFS, Geospatial Australia, Western Murray Irrigation Ltd. While every care is taken to ensure the accuracy of this product, Wentworth Shire Council and the Local / State / Federal Government departments and Non-Government organisations whom supply datasets, make no representation or warranty about its accuracy, reliability, completeness or suitability for any particular purpose and disclaim all responsibility and all liability (including without limitation, liability or negligence for all expenses, losses, damages including indirect or consequential damages) and costs which you might incur as a result of the product being inaccurate or incomplete in any way and for any reason.

* This map is not to be sold or rented as part of a commercial product.